

ALCOHOL WIPES

These highly efficacious general purpose wipes contain 70% Isopropylalcohol (IPA). With an ultra-low linting material which delivers a controlled dosage to ensure optimum disinfection performance with every wipe.

2 products in this range.



AT A GLANCE:

- ✓ PHMB Free
- ✓ Fast drying
- ✓ No visible residue

IDEAL FOR:

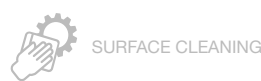
- ✓ Disinfecting hard surfaces on non invasive medical devices and equipment
- ✓ Use where there is a high risk of infection



SKIN HYGIENE



HIGH LEVEL DISINFECTION



SURFACE CLEANING



SURFACE DISINFECTANT

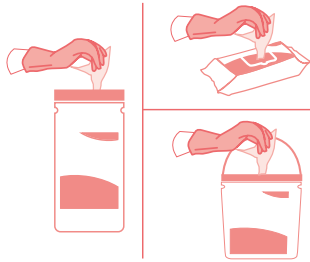
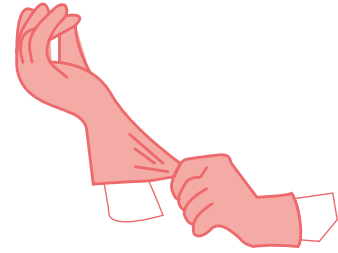


Scan for online factsheet
and safety data sheet

HOW TO USE:

STEP 1 | RISK ASSESSMENT

Please follow your agreed risk assessment policy guidelines regarding the use of PPE.



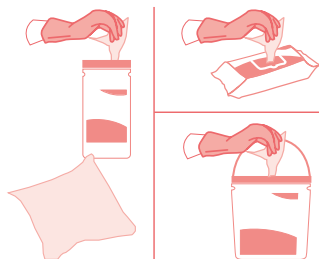
STEP 2 | WIPE SELECTION

Choose the dispenser type and dispense the wipe.

STEP 3 | S-SHAPE TECHNIQUE

Wipe the surface in an S Shape moving from clean to dirty. Use the wipe flat not scrunched.

Do not go over the same area twice with the same wipe.

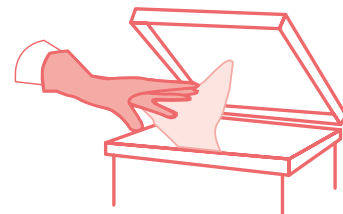


STEP 4 | FRESH WIPE

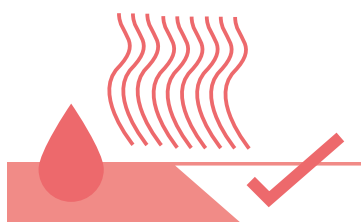
Use a fresh wipe if your wipe becomes soiled or dry.

STEP 5 | DISCARD

Discard used wipes in the appropriate waste bin following your local agreed guidelines.



Do not flush 



STEP 6 | LET DRY

Allow the surface to dry before use.

TECHNICAL DETAILS



Medipal's proprietary Tritex[®] material is made by bonding layers of spunbond and meltblown polypropylene fibres together in a high heat process. The addition of a hydrophilic coating means optimum and consistent liquid discharge.

CHEMICAL FORMULATION

Medipal Alcohol Disinfectant Wipes use isopropyl alcohol. Isopropanol is commonly used as a disinfectant and as an antiseptic. It has limited residual activity due to evaporation, which results in brief contact times unless the surface is submerged, and have a limited activity in the presence of organic material.

Alcohols are most effective when combined with purified water to facilitate diffusion through the cell membrane. A mixture of 70% isopropanol diluted in water is effective against a wide spectrum of bacteria.

MATERIALS

Tritex[®] material is made by bonding layers of spunbond and meltblown polypropylene fibres together in a high heat process before a hydrophilic coating is applied. This material is 100% synthetic.



High Strength

The material offers high strength in both directions – across and along the wipe.



Excellent Solution Retention

Ensuring even wetness throughout the wipe.



Very Low Linting

Low risk of leaving contaminating fibres on surfaces.



Efficient Solution Release

Active wipe ingredients are transferred to the surface rather than being trapped in the wipe material fibres.

Efficacy details

Effective Against	Test	Kill Time
BACTERICIDAL		
Acinetobacter Baumannii	EN 13697	30 seconds
	EN 14561	30 seconds
E. Coli (EsbI)	EN 13697	30 seconds
	EN 1276	1 minute
Enterococcus Faecalis (Vre)	EN 13697	30 seconds
	EN 14561	30 seconds
Enterococcus Hirae	EN 16615	1 minute
	EN 13727	1 minute
	EN 13697	30 seconds
	EN 1276	1 minute
	EN 14561	30 seconds
Pseudomonas Aeruginosa	EN 16615	1 minute
	EN 13727	1 minute
	EN 13697	30 seconds
	EN 1276	1 minute
	EN 14561	30 seconds
S. Aureus (Mrsa)	EN 13697	30 seconds
	EN 14561	30 seconds
Staphylococcus Aureus	EN 16615	1 minute
	EN 13727	1 minute
	EN 13697	30 seconds
	EN 1276	1 minute
	EN 14561	30 seconds
MYCOBACTERICIDAL		
Mycobacterium Avium	EN 14348	1 minute
	EN 14563	1 minute
Mycobacterium Terrae	EN 14348	1 minute
	EN 14563	1 minute

Efficacy details

Effective Against	Test	Kill Time
VIRUCIDAL		
Murine Norovirus	EN 14476	1 minute
Vaccinia Ankara Virus	EN 14476	5 minutes
	* This test covers all enveloped viruses according to EN 14476 2013 + A1 2015 Annex A	
YEASTICIDAL AND FUNGICIDAL		
Candida Albicans	EN 16615	1 minute
	EN 13624	1 minute
	EN 1650	1 minute

PRODUCTS WITHIN THIS RANGE

100 WIPE CANISTER



Quantity:
100 per pack
10 packs per case

Product Code:
W605110MPCE

200 WIPE CANISTER



Quantity:
200 per pack
10 packs per case

Product Code:
W600110MPCE